

■ 1 - Introduction to the software

■ 2 - Start the software

■ 3 - Handling step by step

■ A - Choice of the product line and model

- A1 - Choice of the collection
- A2 - Choice of the model
- A3 - Choice of the product
- A4 - Display the template

■ B - Importation and organization of your texts and pictures

- B1 - Understand the template
- B2 - Organizing your frames
- B3 - Import a picture
- B4 - The picture toolbar
- B5 - Zoom on a work plan
- B6 - Duplicate a text or a picture

■ C - Writing and organizing your text

- C1 - The texts
- C2 - The texts toolbar

■ D - Impression / Exportation / Importation

- D1 - Printing
- D2 - Export
- D3 - Import

**LEGAL MENTIONS :**

*Copyright © Labelprint 2003-2005. All rights reserved.*

*Warning: this program is protected by the law relative to copyrights and by the international conventions.*

**AVERTISSEMENT :**

*Les formats images supportés, mode RVB uniquement, sont :*

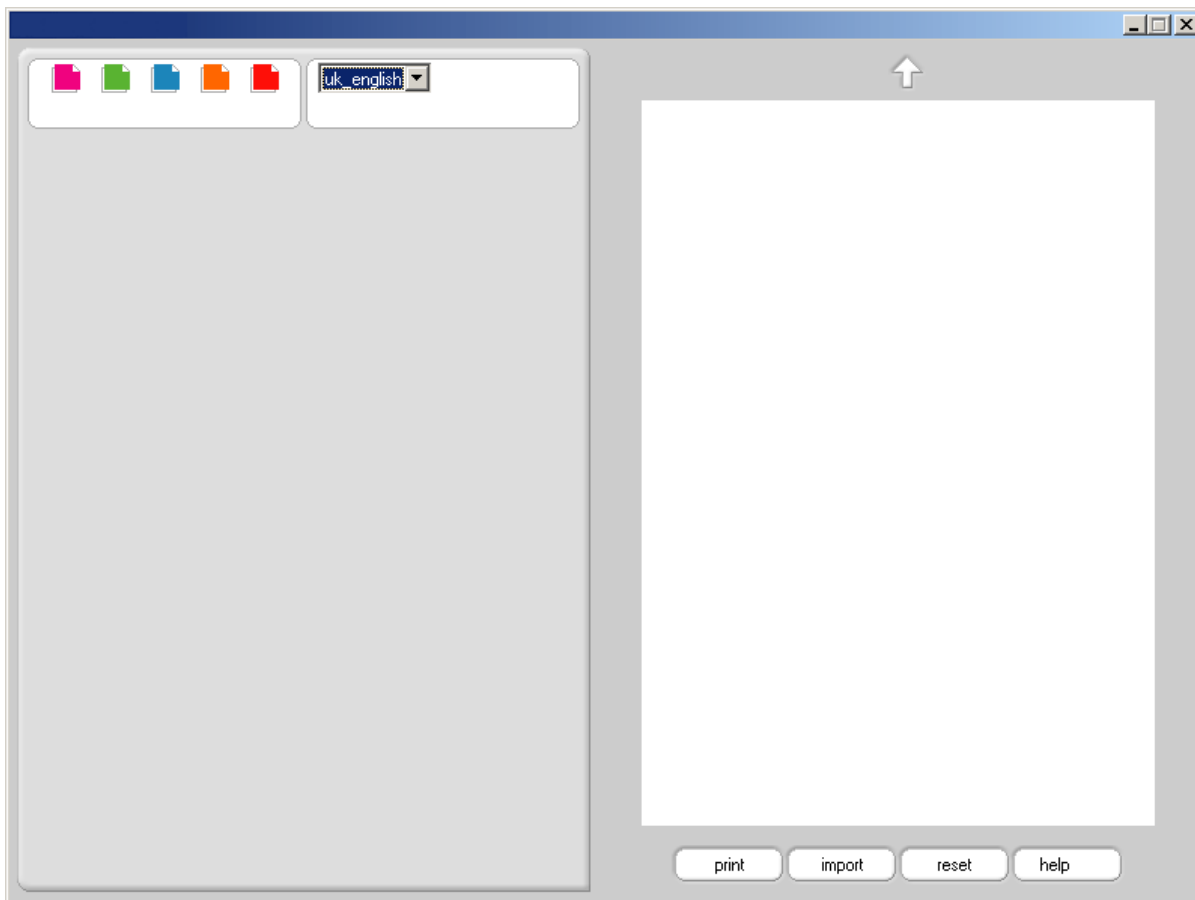
- BMP, BMP OS/2, RLE, DIB*
- GIF (Graphics Interchange Format)*
- JPG (JPEG Joint Photographic Experts Group)*
- PCX*
- PNG (Portable Network Graphics)*
- TIF (Tagged-Image File Format (TIFF))*
- TGA (Targa®)*

## 1 - Introduction to the Software

With this software, you can have your printed pictures in just a few minutes by following four easy steps: import your digital images, position your text, crop your pictures and print them on your paper. With the software, it is fast and easy, all way long.

## 2 - Start the software

Double-click on the icon on your desktop or launch the application in the to start menu.  
The following window will appear:



## 3 - Handling step by step

The software handling proceeds with 4 operations:

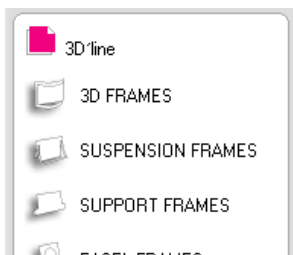
- A - Choice of the product line and model.
- B - Importation and organization of your pictures, using the frames.
- C - Writing and organizing your text.
- D - Printing.

## A - Choice of the product line and model



### A1 - Choice of the collection

In the opposite menu, click on the color corresponding to the product you bought.  
> We will take the example of a 3D-line product



### A2 - Choice of the model

The following menu appears. Click on the model corresponding to the color selected in A1.  
> We will take the example of a 3D Frame.



### A3 - Choice of the product

In the following menu, a detailed list of the products appears composing the selected model in A2. In this list, find the product corresponding to your product, then select it by a simple clic.

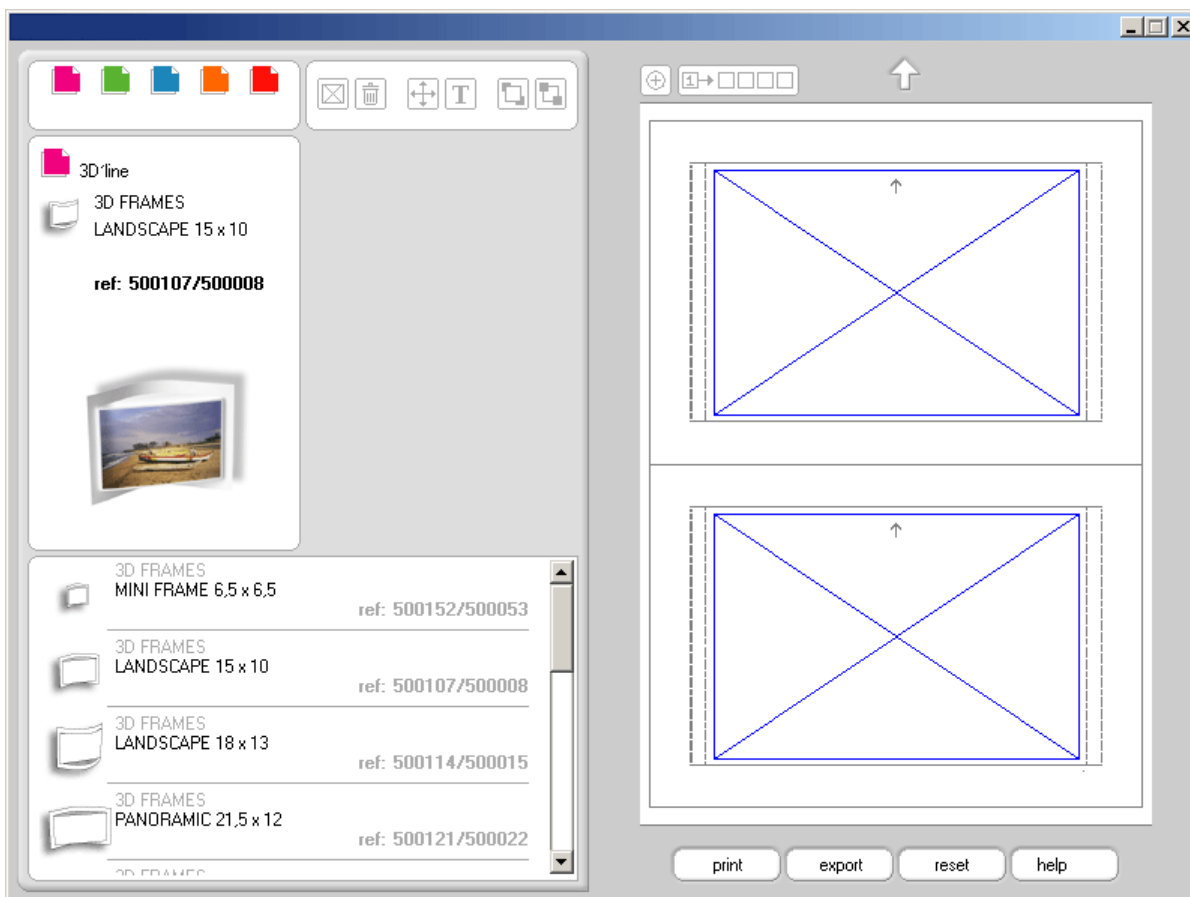
To be sure you have made the good choice, you can check the reference number registered on your box.

> We will take the example of the 3D Frame "Landscape"

### A4 - Displaying the work area

When the product is selected, the work area appears and shows the printable area

The arrow located at the top of the sheet A4 shows the printer feed direction. It shows which side of the sheet will be printed first !



## B - Importation and organization of your pictures, using the frames

### Introduction to the layout

A layout is formed by texts and pictures. The software offers you to compose your own layout, completely independent and modifiable :

- **Frames**, unlimited in numbers, able to accommodate images from your hard-drive or from a CD (digital pictures, numerized documents).
- **Texts**, in an unlimited number, which you write directly on the template.

### B1 - Understand the template

Easy to understand! The template appearing on the screen represents one letter size photo paper sheet on which you will import images and text. The product you chose is drawn in light grey and indicates the direction of your picture.

- **The blue frame** represents the print areas per default corresponding to your product and occupies the entire printing areas. A red frame means it has been selected.
- **The green frames** represent the different working areas. Furthermore, they indicate the maximum space inside of which you can import an unlimited number of images.



#### Create a frame

Click on this icon and draw a frame inside of the green one.



#### Select / Give a size / Move

Once selected, this option enables you to do some modifications on the frames selected : move, enlarge or reduce.



#### Delete a frame or a text

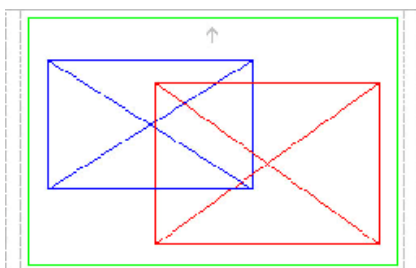
To delete a selected frame or text click on this icon.



#### Send a frame back and front



Click on the icon # 1 to put one of the two frames forward or on the icon # 2 to put it behind.

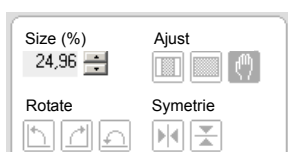
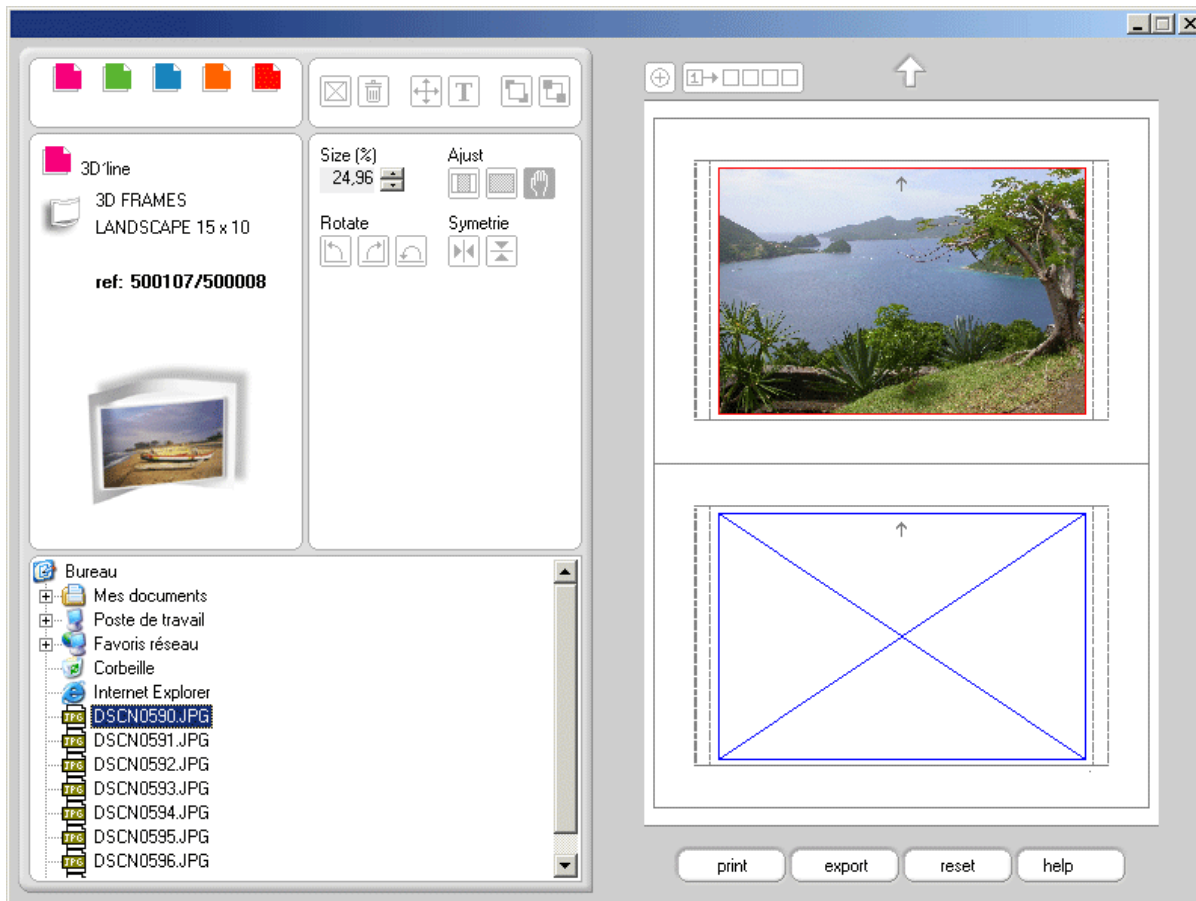


### B2 - Organizing your frames

- A frame allows you to import a picture. You can create as many frames as you wish.
- Each of these frameworks is resizeable and allows to zoom in and out, reframe or position an image.
- With the frames you have the opportunity to move a picture while keeping all its characteristics. For each working area, a frame is created representing the maximum space a picture can occupy.

### B3 - Import a picture

When you click on the frame, your computer's files appear on the left bottom side of the software. Select and click on a picture and it will automatically appears in the frame.



### B4 - The picture toolbar

When your picture is in the selected frame, this toolbar appears and allows you to adjust it such as :

- the size
- the angle.
- the color
- the font



### B5 - Zoom on a work plan

To zoom, just click on this icon (top left corner of the template), then on the work plan. To go back, click again on the icon.



### B6 - Duplicate a text or a picture

Click on this icon to duplicate the text or the picture you have on your plan.

**Be careful, all the working areas will be replaced by the model you have chosen for the duplication.**

## C - Writing and organizing your text

### Introduction to the layout

A layout is formed by texts and pictures. The software offers you to compose your own layout, completely independent and modifiable:

- **Trames**, unlimited in numbers, able to accommodate images from your hard-drive or from a CD (digital pictures, numerized documents).
- **Texts**, in an unlimited number, which you write directly on the template.

### C1 - The texts

Just like the images, texts are managed like objects. Each portion modifiable and movable.



#### Write a text

Click on this icon to write a text, then position it wherever you want on the template.



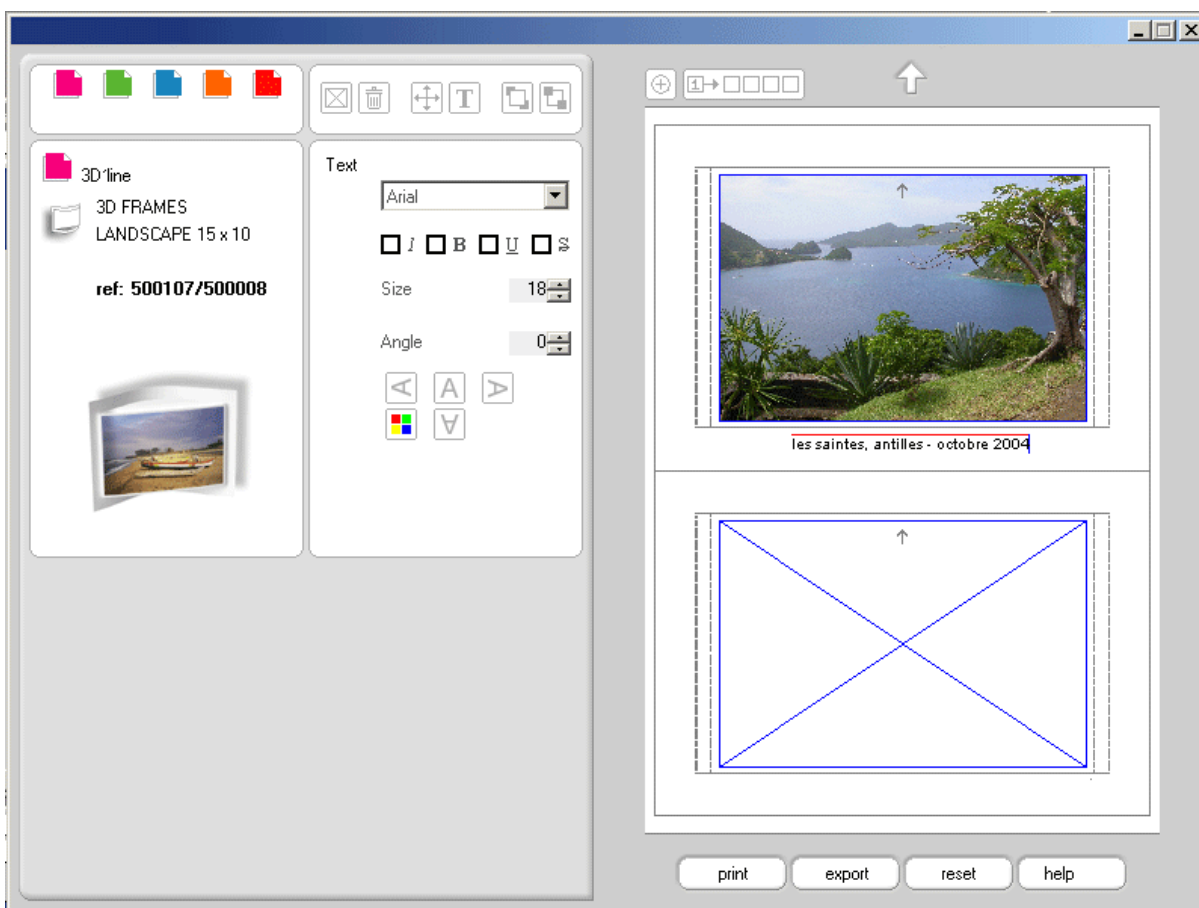
#### Move a text

Once selected, this option enables you to move the texts on the template.

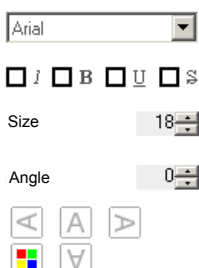


#### Delete a text

To delete a selected text click on this icon.



Text



### C2 - The texts toolbar

When you write or select a text, this toolbar appears and allows you to personalize it by modifying:

- the font including size and style
- the angle
- the color

## C - Printing / Export / Import

### D1 - Printing

You are now ready to print. You can insert a sheet (or more) in your ink jet printer and get ready to print.

**IMPORTANT: Look carefully at the printing side of the sheet. Insert your photo paper as indicated by the arrows on the template.**

Before printing, if you are not sure about the feeding direction of your printer, we suggest that you make a test on a plain sheet of paper, and configure your printer in the "economy" mode.



Click on this icon to launch the printing

### D2 - Export

It is possible to export a copy of your work to future printings.

The picture is in a format you can open with this software.



Click on this icon to launch the printing.

N.B. : Choose the best paper quality and the highest resolution in the printing option

### D3 - Import

It is possible to import a modifiable copy of your work for new printings.



Click on this icon to import an previous export, saved first on your computer